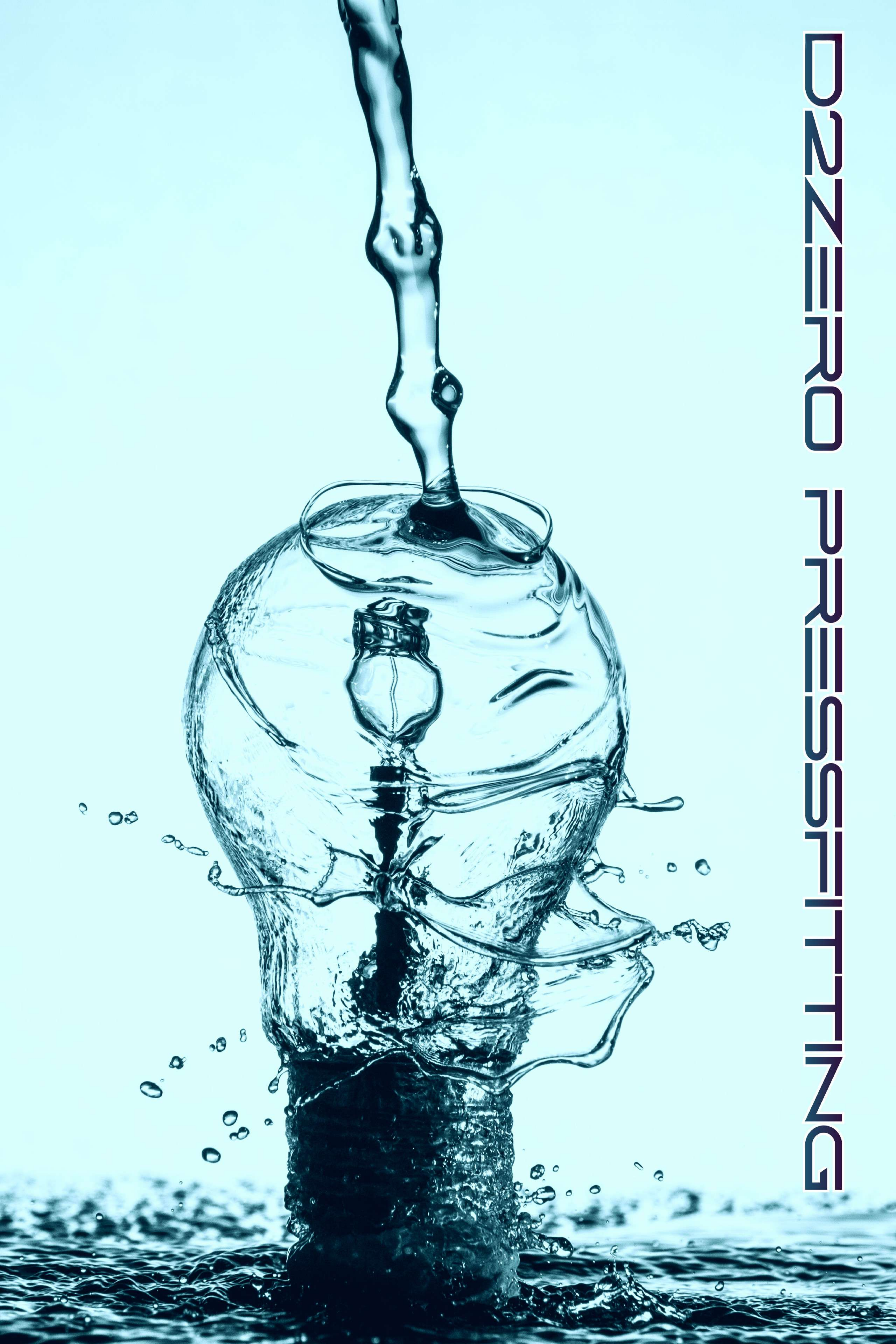


ONZIERO PRESSFITTING



Il Pressfitting è il sistema di giunzione che, tramite pressatura a freddo tra tubi e raccordi, permette un'eccezionale rapidità e semplicità nel montaggio. Questo sistema, composto da tubi e raccordi profilo "M" in acciaio inox così come dalle pressatrici necessarie atte al montaggio, consente di realizzare varie tipologie di impianti nel settore civile e industriale, con una ampia gamma di diametri, a partire dal 15 mm fino ad arrivare al 168,3 mm.

Il sistema è oramai riconosciuto a livello internazionale dai principali enti certificatori, ed è omologato PN16. Tramite gli specifici O-Ring può raggiungere temperature fino a 200°C.

PRINCIPALI VANTAGGI DEL SISTEMA PRESSFITTING

- *Ottima alternativa al saldato ed al filettato, allo scanalato e ai raccordi in plastica.*
- *Facilità e rapidità di impiego.*
- *Sensibile riduzione del peso movimentato e installato.*
- *Affidabilità in ogni condizione.*
- *Eliminazione dei processi di lavorazione dei sistemi tradizionali.*
- *Pre-assemblaggio velocizzato e facilitato sia in officina sia in opera.*
- *Azzeramento dei rischi di incendio durante le varie fasi di installazione.*

Il sistema pressfitting IN ACCIAIO INOX risulta la soluzione ideale per impianti di riscaldamento, raffrescamento, fluidi tecnici, antincendio, aria compressa e solari termici. Non è invece utilizzabile per impianti di acqua potabile.



soluzioni inossidabili

03

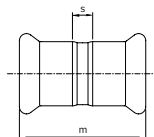
MANICOTTO



FIG.1

MAT: AISI 304

disponibili anche in AISI 316



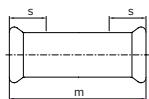
Codice	Diametro	m	s	€/cad.
PFT401015000	15	48	8	6,34
PFT401018000	18	48	8	7,18
PFT401022000	22	50,5	8	8,46
PFT401028000	28	52	8	10,56
PFT401035000	35	70	18	13,99
PFT401042000	42	78	18	18,04
PFT401054000	54	85,5	18	21,66
PFT401076000	76,1	140,5	33	99,35
PFT401089000	88,9	160	45	110,19
PFT401108000	108	197	58	134,96

MANICOTTO PASSANTE



FIG.2

MAT: AISI 316L



Codice	Diametro	m	s	€/cad.
PFT002015000	15	80	27,5	24,39
PFT002018000	18	80	27,5	24,70
PFT002022000	22	71	19,5	25,09
PFT002028000	28	89	22	25,49
PFT002035000	35	99	26	38,13
PFT002042000	42	114	30	40,90
PFT002054000	54	136	34	45,40
PFT002076000	76,1	226	54	266,33
PFT002089000	88,9	255	58	304,73
PFT002108000	108	300	71,5	345,48

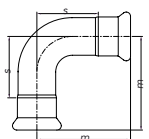
CURVA 90° FF



FIG.3

MAT: AISI 304

disponibili anche in AISI 316



Codice	Diametro	m	s	€/cad.
PFT403015000	15	48	28	11,63
PFT403018000	18	52	32	13,01
PFT403022000	22	61	40	15,76
PFT403028000	28	71,5	49	19,65
PFT403035000	35	74	48	30,29
PFT403042000	42	86	56	47,81
PFT403054000	54	105,5	71,5	64,85
PFT403076000	76,1	177	123,5	175,56
PFT403089000	88,9	181	123	229,64
PFT403108000	108	214	140	289,73

CURVA 90° MF

Codice	Diametro	m	h	s	€/cad.
PFT404015000	15	48	67	28	10,93
PFT404018000	18	52	65	32	12,40
PFT404022000	22	61	74	40	15,69
PFT404028000	28	71,5	82	49	19,34
PFT404035000	35	74	85	48	30,29
PFT404042000	42	86	96,5	56	47,16
PFT404054000	54	105	122	71,5	62,73
PFT404076000	76,1	177	195	123,5	156,43
PFT404089000	88,9	181	202	123	205,90
PFT404108000	108	214	240	140	278,84

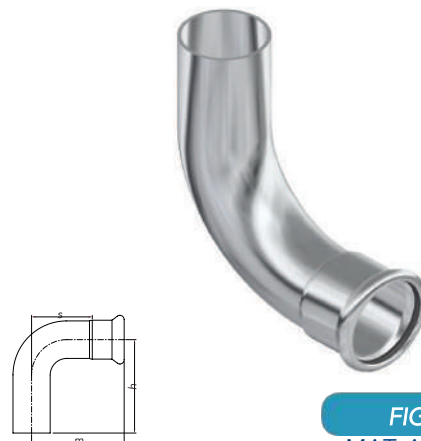


FIG.4
MAT: AISI 304

disponibili anche in AISI 316

CURVA 45° FF

Codice	Diametro	m	s	€/cad.
PFT405015000	15	34,5	14,5	11,73
PFT405018000	18	36	16	12,60
PFT405022000	22	41	20	15,06
PFT405028000	28	46	24	19,16
PFT405035000	35	54,5	28,5	28,84
PFT405042000	42	67,5	37,5	44,00
PFT405054000	54	66,5	33	58,45
PFT405076000	76,1	111	57,5	166,30
PFT405089000	88,9	114	56	212,18
PFT405108000	108	138	64	278,49

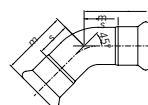


FIG.5
MAT: AISI 304

disponibili anche in AISI 316

CURVA 45° MF

Codice	Diametro	m	h	s	€/cad.
PFT406015000	15	34,5	47	14,5	12,09
PFT406018000	18	36	48,5	16	13,30
PFT406022000	22	40	52	20	15,81
PFT406028000	28	46	58	24	19,30
PFT406035000	35	54,5	69	28,5	26,79
PFT406042000	42	67,5	77,5	37,5	42,33
PFT406054000	54	66,5	84	33	53,89
PFT406076000	76,1	111	128	57,5	153,78
PFT406089000	88,9	114	135	56	195,34
PFT406108000	108	138	169	64	261,66

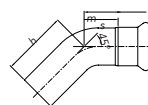


FIG.6
MAT: AISI 304

disponibili anche in AISI 316



soluzioni inossidabili

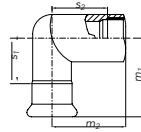
05

GOMITO MISTO 90° FILETTO FEMMINA



FIG.7

MAT: AISI 316L



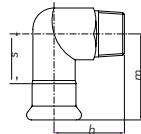
Codice	Diametro	m1	m2	s1	s2	€/cad.
PFT007015102	15-1/2"	57	37	37	24	26,10
PFT007018102	18-1/2"	57	39	37	26	27,89
PFT007018304	18-3/4"	59	46	39	31	33,04
PFT007022304	22-3/4"	59	46	39	31	34,41
PFT007028100	28-1"	67	54	44	37	47,14
PFT007035114	35-11/4"	75	63	49	44	80,28

GOMITO MISTO 90° FILETTO MASCHIO



FIG.8

MAT: AISI 316L



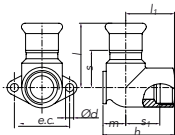
Codice	Diametro	m	h	s	€/cad.
PFT008015102	15-1/2"	57	37	37	24,18
PFT008018102	18-1/2"	57	39	37	25,55
PFT008018304	18-3/4"	59	46	39	31,30
PFT008022304	22-3/4"	59	46	39	32,13
PFT008028100	28-1"	67	54	44	42,03
PFT008035114	35-11/4"	75	63	49	58,93
PFT008042112	42-11/2"	84	67	54	83,08
PFT008054200	54-2"	93	78	60	101,71

GOMITO MISTO 90° FILETTO FEMMINA FLANGIATO



FIG.9

MAT: AISI 316L



Codice	Diametro	m	h	li	l	Ød	e.c.	s	s1	€/cad.
PFT009015102	15-1/2"	14	44	30	50	5	34	28	17	28,08
PFT009018102	18-1/2"	14	44	30	50	5	34	30	17	29,11
PFT009022304	22-3/4"	18	51	34	54	6	40	33	20	36,24

TUBO RICURVO 90°

Codice	Diametro	h_1	$h_{1min.}$	h_2	$h_{2min.}$	€/cad.
PFT010015000	15	70	58	120	58	15,48
PFT010018000	18	70	63	120	63	15,86
PFT010022000	22	70	70	120	70	16,48
PFT010028000	28	80	80	120	80	17,45
PFT010035000	35	120	100	200	100	35,81
PFT010042000	42	150	120	250	120	44,28
PFT010054000	54	200	145	300	145	55,39
PFT010076000	76,1	195	140	195	140	192,06
PFT010089000	88,9	202	144	202	144	243,16
PFT010108000	108	240	170	240	170	275,56



FIG.10

MAT: AISI 316L

MANICOTTO CON DADO GIREVOLE FILETTO FEMMINA

Codice	Diametro	m	s	€/cad.
PFT011015102	15-1/2"	63,5	37,5	28,01
PFT011018102	18-1/2"	62	37	30,94
PFT011018304	18-3/4"	61	36	31,61
PFT011022304	22-3/4"	64	39,5	37,06
PFT011028100	28-1"	69,5	43,5	46,01
PFT011035114	35-11/4"	76	42	52,25
PFT011042112	42-11/2"	82,5	46	70,53
PFT011054200	54-2"	88	50	84,93
PFT011054212	54-21/2"	105	52,5	158,35
PFT011076212	76,1-21/2"	185,5	113	378,76
PFT011089300	88,9-3"	186	108,5	523,80

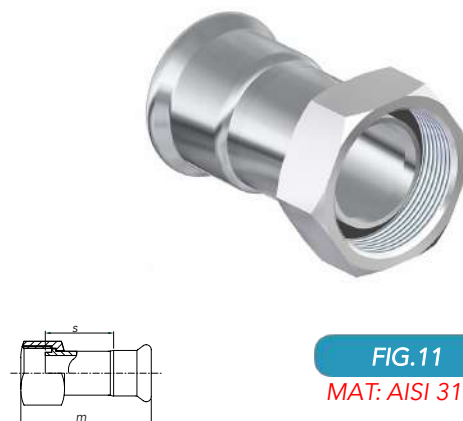


FIG.11

MAT: AISI 316L



soluzioni inossidabili

07

TEE CON DERIVAZIONE FILETTO FEMMINA

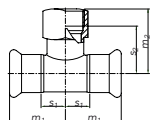


FIG.12

MAT: AISI 304

disponibili anche in AISI 316

Codice	Diametro	m1	m2	s1	s2	€/cad.
PFT412015102	15-1/2"-15	32	36	12	23	20,58
PFT412018102	18-1/2"-18	34	37	14	24	20,84
PFT412018304	18-3/4"-18	34	41	14	26	22,70
PFT412022102	22-1/2"-22	35,5	39	16	26	25,36
PFT412022304	22-3/4"-22	35,5	44	16	29	27,49
PFT412028102	28-1/2"-28	41	42	19	29	29,38
PFT412028304	28-3/4"-28	41	46	19	31	31,53
PFT412028100	28-1"-28	41	47	19	30	34,76
PFT412035102	35-1/2"-35	50	45	24	32	32,59
PFT412035304	35-3/4"-35	50	50	24	35	38,54
PFT412035100	35-1"-35	50	51	24	34	40,71
PFT412035114	35-11/4"-35	50	55	24	36	40,66
PFT412042102	42-1/2"-42	57	48	27	35	38,36
PFT412042304	42-3/4"-42	57	52	27	37	43,59
PFT412042100	42-1"-42	57	53	27	34	46,29
PFT412042112	42-11/2"-42	57	61	27	42	60,59
PFT412054102	54-1/2"-54	68	55	34	41	55,09
PFT412054304	54-3/4"-54	68	58	34	43	59,79
PFT412054100	54-1"-54	68	59	34	41	60,31
PFT412054200	54-2"-54	68	76	34	47	102,84
PFT412076304	76,1-3/4"-76,1	113	71	59	56	230,53
PFT412076200	76,1-2"-76,1	113	91	59	62	268,29
PFT412089304	88,9-3/4"-88,9	128	78	70	63	262,26
PFT412089100	88,9-1"-88,9	128	77	70	58	282,60
PFT412089200	88,9-2"-88,9	128	97	70	68	300,01
PFT412108304	108-3/4"-108	150	87	81	72	309,80
PFT412108100	108-1"-108	150	87	81	69	303,93
PFT412108112	108-11/2"-108	150	97	81	72	309,26
PFT412108200	108-2"-108	150	107	81	78	333,65

RIDUZIONE MF

Codice	Diametro	m	s	€/cad.
PFT414018015	18-15	62	42	8,68
PFT414022015	22-15	64	44	9,63
PFT414022018	22-18	60	40	9,74
PFT414028015	28-15	68	48	15,65
PFT414028018	28-18	66	46	12,98
PFT414028022	28-22	65	45,5	15,65
PFT414035015	35-15	77	57	34,09
PFT414035018	35-18	77	57	26,11
PFT414035022	35-22	81	61,5	17,30
PFT414035028	35-28	74	52	17,74
PFT414042015	42-15	85	65	33,85
PFT414042018	42-18	87	67	33,70
PFT414042022	42-22	86	66,5	27,63
PFT414042028	42-28	82	60	28,99
PFT414042035	42-35	88	62	21,28
PFT414054015	54-15	92	72	54,90
PFT414054018	54-18	93	73	52,31
PFT414054022	54-22	92	72,5	43,23
PFT414054028	54-28	93	71	38,03
PFT414054035	54-35	101	75	38,80
PFT414054042	54-42	101	71	26,64
PFT414076022	76,1-22	120	100,5	156,34
PFT414076028	76,1-28	123	101	150,39
PFT414076035	76,1-35	126	100	144,98
PFT414076042	76,1-42	130	100	94,71
PFT414076054	76,1-54	132	98	95,36
PFT414089022	88,9-22	144	123	130,20
PFT414089028	88,9-28	145	123	124,40
PFT414089035	88,9-35	147	121	118,05
PFT414089042	88,9-42	159	129	117,46
PFT414089054	88,9-54	162	128	112,70
PFT414089076	88,9-76,1	179	126	153,78
PFT414108022	108-22	165	144	133,30
PFT414108028	108-28	165	143	125,30
PFT414108035	108-35	169	143	122,64
PFT414108042	108-42	173	143	117,31
PFT414108054	108-54	179	145	131,34
PFT414108076	108-76,1	198	145	169,68
PFT414108089	108-88,9	206	148	175,34

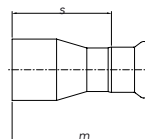


FIG. 14

MAT: AISI 304

disponibili anche in AISI 316



soluzioni inossidabili

09

TEE RIDOTTO

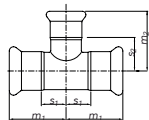


FIG. 15

MAT: AISI 304

disponibili anche in AISI 316

Codice	Diametro	m1	m2	s1	s2	€/cad.
PFT415018015	18-15-18	34	40	14	20	19,08
PFT415022015	22-15-22	35,5	42	16	22	20,50
PFT415022018	22-18-22	35,5	42	16	22	21,13
PFT415028015	28-15-28	41	45	19	25	24,69
PFT415028018	28-18-28	41	45	19	25	25,46
PFT415028022	28-22-28	41	45	19	25	26,59
PFT415035015	35-15-35	50	48	24	28	30,14
PFT415035018	35-18-35	50	48	24	28	30,91
PFT415035022	35-22-35	50	48	24	28	31,50
PFT415035028	35-28-35	50	51	24	28	32,76
PFT415042015	42-15-42	57	51,5	27	31,5	40,95
PFT415042018	42-18-42	57	52	27	31	40,95
PFT415042022	42-22-42	57	51	27	31	44,26
PFT415042028	42-28-42	57	53	27	31	45,98
PFT415042035	42-35-42	57	57	27	31	47,65
PFT415054015	54-15-54	68	56,5	34	37,5	53,40
PFT415054018	54-18-54	68	56,5	34	37,5	53,40
PFT415054022	54-22-54	68	57	34	37,5	53,40
PFT415054028	54-28-54	68	60	34	38	54,61
PFT415054035	54-35-54	68	63	34	37	57,13
PFT415054042	54-42-54	68	67	34	37	59,61
PFT415076018	76,1-18-76,1	113	69	59	49	234,61
PFT415076022	76,1-22-76,1	113	68	59	48	209,53
PFT415076028	76,1-28-76,1	113	72	59	49	212,83
PFT415076035	76,1-35-76,1	113	74	59	48	219,11
PFT415076042	76,1-42-76,1	113	76	59	46	222,74
PFT415076054	76,1-54-76,1	113	83	59	46,7	228,99
PFT415089022	88,9-22-88,9	128	75	72	55	239,23
PFT415089028	88,9-28-88,9	128	79	72	56	245,48
PFT415089035	88,9-35-88,9	128	81	72	55	252,41
PFT415089042	88,9-42-88,9	128	83	72	53	262,00
PFT415089054	88,9-54-88,9	128	90	72	53,7	268,93
PFT415089076	88,9-76,1-88,9	128	115	72	63	285,11
PFT415108022	108-22-108	150	84	81	64	301,91
PFT415108028	108-28-108	150	88	81	65	311,83
PFT415108035	108-35-108	150	90	81	64	320,41
PFT415108042	108-42-108	150	95	81	65	327,98
PFT415108054	108-54-108	150	99	81	65	341,51
PFT415108076	108-76,1-108	150	126,5	81	73	384,74
PFT415108089	108-88,9-108	150	136	81	74	393,95

TEE

Codice	Diametro	m1	m2	s1	s2	€/cad.
PFT416015000	15	32	39	12	19	18,98
PFT416018000	18	34	39	14	19	21,18
PFT416022000	22	35,5	42	16	21	23,34
PFT416028000	28	41	47	19	25	28,09
PFT416035000	35	50	53	24	27	36,06
PFT416042000	42	57	60	27	30	48,90
PFT416054000	54	68	71	34	37	59,79
PFT416076000	76,1	113	110	59	55	246,83
PFT416089000	88,9	128	128	72	69	277,84
PFT416108000	108	150	154	81	85	341,88

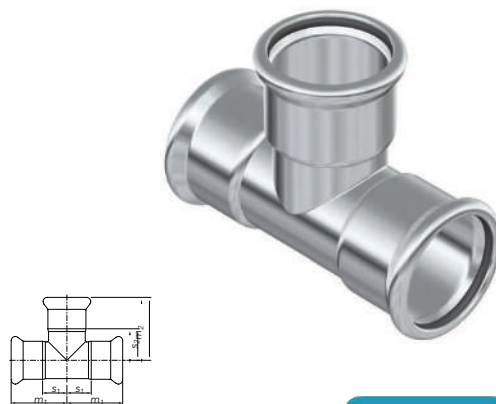


FIG.16

MAT: AISI 304

disponibili anche in AISI 316

MANICOTTO MISTO FILETTO FEMMINA

Codice	Diametro	m	s	€/cad.
PFT417015308	15-3/8"	54	34	17,39
PFT417015102	15-1/2"	54	34	17,39
PFT417015304	15-3/4"	58	38	22,68
PFT417018102	18-1/2"	54	34	18,48
PFT417018304	18-3/4"	58	38	19,95
PFT417022102	22-1/2"	52	32,5	23,11
PFT417022304	22-3/4"	58	38	23,58
PFT417022100	22-1"	59	39,5	27,75
PFT417028304	28-3/4"	60	38	32,25
PFT417028100	28-1"	60,5	38,5	33,00
PFT417028114	28-11/4"	65	43	37,08
PFT417035100	35-1"	64	38	36,63
PFT417035114	35-11/4"	69	43	37,98
PFT417035112	35-11/2"	73	47	50,93
PFT417042114	42-11/4"	72	42	52,49
PFT417042112	42-11/2"	77	47	54,30
PFT417054112	54-11/2"	81	47	78,40
PFT417054200	54-2"	90	56	70,28
PFT417076212	76,1-21/2"	129	75,5	184,99
PFT417089300	88,9-3"	118	60,5	324,88

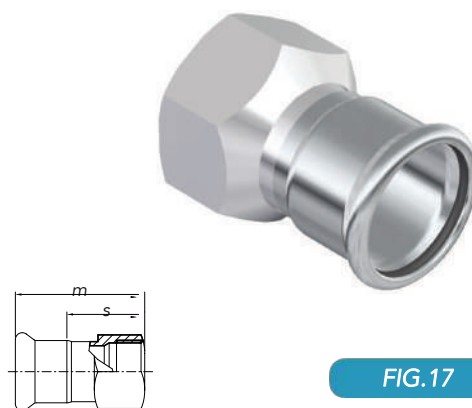


FIG.17

MAT: AISI 304

disponibili anche in AISI 316



soluzioni inossidabili

11

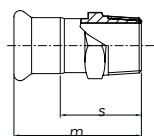


FIG.18

MAT: AISI 304

disponibili anche in AISI 316

MANICOTTO MISTO FILETTO MASCHIO

Codice	Diametro	m	s	€/cad.
PFT418015102	15-1/2"	53,5	33,5	16,51
PFT418015304	15-3/4"	57,5	37,5	19,80
PFT418015308	15-3/8"	48	28	16,51
PFT418018102	18-1/2"	53,5	33,5	17,39
PFT418018304	18-3/4"	58	38	19,51
PFT418022102	22-1/2"	53	33,5	21,18
PFT418022304	22-3/4"	57	37,5	22,08
PFT418022100	22-1"	60,5	41	23,25
PFT418028304	28-3/4"	60	38	27,44
PFT418028100	28-1"	63	41	29,40
PFT418028114	28-11/4"	67	45	31,48
PFT418035100	35-1"	67	41	31,69
PFT418035114	35-11/4"	71	45	38,03
PFT418035112	35-11/2"	74	48	47,06
PFT418042114	42-11/4"	75	45	43,90
PFT418042112	42-11/2"	78	48	53,69
PFT418054112	54-11/2"	82	48	55,21
PFT418054200	54-2"	84	50	62,08
PFT418076212	76,1-21/2"	127,5	74	187,35
PFT418089300	88,9-3"	142	86	281,68
PFT418108400	108-4"	155	73	439,10

MANICOTTO FLANGIATO PN16

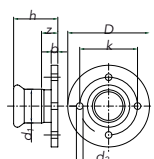


FIG.19

MAT: AISI 316L

Codice	Diametro	D	k	b	d ₂	h n*	z	€/cad.
PFT019015015	15-DN 15	95	65	14	14	45 4	25	84,63
PFT019018015	18-DN 15	95	65	14	14	47 4	27	88,74
PFT019022020	22-DN 20	105	75	16	14	52 4	31	94,76
PFT019028025	28-DN 25	115	85	16	14	56 4	34	111,49
PFT019035032	35-DN 32	140	100	18	18	66 4	40	180,15
PFT019042040	42-DN 40	150	110	18	18	74 4	44	212,04
PFT019054050	54-DN 50	165	125	18	18	85 4	51	226,78
PFT019076065	76,1-DN 65	185	145	20	18	132 4	78	306,93
PFT019089080	88,9- DN 80	200	160	20	18	146 8	91	380,74
PFT019108100	108-DN 100	220	180	20	18	169 8	100	546,45

"S" DI SCAVALCAMENTO

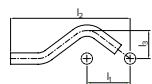


FIG.20

MAT: AISI 316L

Codice	Diametro	l ₁	l ₂	l ₃	€/cad.
PFT020015000	15	57	158	37	18,70
PFT020018000	18	60	165	40	21,65
PFT020022000	22	65	178	44	24,64
PFT020028000	28	74	210	50	27,10

TAPPO DI CHIUSURA

Codice	Diametro	l	b	€/cad.
PFT021015000	15	36	16	16,14
PFT021018000	18	36	16	18,09
PFT021022000	22	40	20,5	20,10
PFT021028000	28	42	20	23,41
PFT021035000	35	51	25	28,16
PFT021042000	42	54	24	36,64
PFT021054000	54	59	25	44,10
PFT021076000	76,1	90	36	88,49
PFT021089000	88,9	102	45	106,76
PFT021108000	108	125	56	116,88

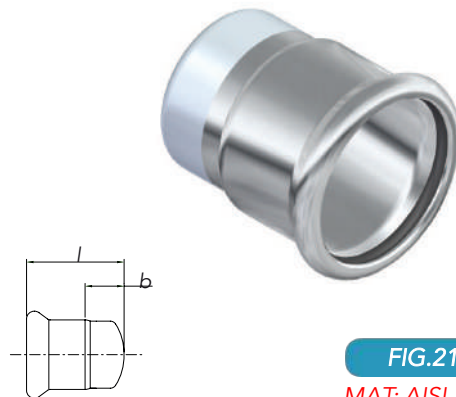


FIG.21

MAT: AISI 316L

TUBO PER ARIA COMPRESSA

Codice	Diametro	b	h	€/cad.
PFT022015000	15	46	208	74,85
PFT022018000	18	54	218	101,34
PFT022022000	22	68	246	105,94
PFT022028000	28	86	283	132,83

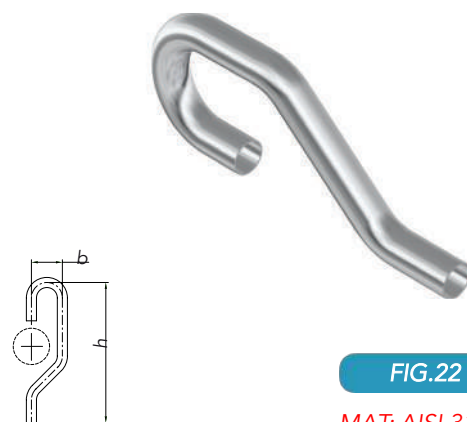


FIG.22

MAT: AISI 316L

SCAVALCAMENTO

Codice	Diametro	€/cad.
PFT023015000	15	63,40
PFT023018000	18	94,28
PFT023022000	22	100,61
PFT023028000	28	128,94



FIG.23

MAT: AISI 316L



soluzioni inossidabili

13

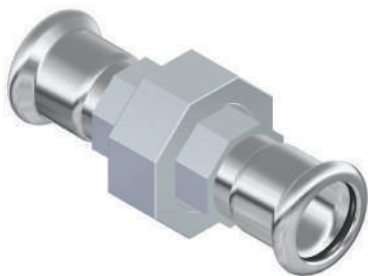


FIG.24

MAT: AISI 316L

BOCCHETTONE 3 PEZZI (SEDE CONICA)

Codice	Diametro	€/cad.
PFT024015000	15	53,41
PFT024018000	18	62,13
PFT024022000	22	67,94
PFT024028000	28	89,29
PFT024035000	35	113,55
PFT024042000	42	135,90
PFT024054000	54	155,36



FIG.25

MAT: AISI 316L

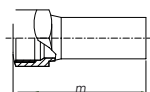
SCAVALCAMENTO FF

Codice	Diametro	€/cad.
PFT025015000	15	76,29
PFT025018000	18	109,88
PFT025022000	22	114,86
PFT025028000	28	147,45



FIG.26

MAT: AISI 316L



MANICOTTO CON INSERIMENTO FILETTO FEMMINA

Codice	Diametro	m	€/cad.
PFT026015102	15-1/2"	58	20,71
PFT026018102	18-1/2"	58	21,69
PFT026018304	18-3/4"	62	23,24
PFT026022102	22-1/2"	58	26,80
PFT026022304	22-3/4"	62	31,13
PFT026028304	28-3/4"	67	38,43
PFT026028100	28-1"	69	38,43
PFT026035114	35-11/4"	76	73,03
PFT026042112	42-11/2"	83	97,90
PFT026054200	54-2"	98,5	101,34

MANICOTTO CON INSERIMENTO FILETTO MASCHIO

Codice	Diametro	m	€/cad.
PFT027015102	15-1/2"	60	19,53
PFT027018102	18-1/2"	60	20,71
PFT027018304	18-3/4"	64	22,44
PFT027022102	22-1/2"	60	26,00
PFT027022304	22-3/4"	64	29,18
PFT027028304	28-3/4"	69	37,28
PFT027028100	28-1"	71	37,28
PFT027035114	35-11/4"	81	71,84
PFT027042112	42-11/2"	88	96,75
PFT027054200	54-2"	93	100,19

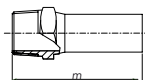


FIG.27

MAT: AISI 316L

MANICOTTO CON FLANGIA LIBERA

Codice	Diametro	D	k	b	d ₂	h	n*	z	€/cad.
PFT028054050	54-DN 50	165	125	19	17,5	78	4	44	121,96
PFT028076065	76,1-DN65	185	145	20	17,5	112	4	70	189,78
PFT028089080	88,9-DN80	200	160	20	17,5	128	8	70	240,35
PFT028108100	108-DN 100	220	180	20	17,5	161	8	86	373,19
PFT028139125	139,7-DN 125	250	210	22	18	138	8	41	581,26
PFT028168150	168,3-DN 150	285	240	24	22	171	8	54	692,14

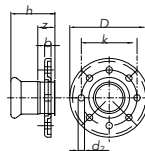


FIG.28

MAT: AISI 316L

TUBO INOX FLESSIBILE FF

Codice	Diametro	€/cad.
PFT029015000	15	SU RICHIESTA
PFT029018000	18	SU RICHIESTA
PFT029022000	22	SU RICHIESTA
PFT029028000	28	SU RICHIESTA
PFT029035000	35	SU RICHIESTA
PFT029042000	42	SU RICHIESTA
PFT029054000	54	SU RICHIESTA
PFT029076000	76,1	SU RICHIESTA
PFT029089000	88,9	SU RICHIESTA
PFT029108000	108	SU RICHIESTA



FIG.29

MAT: AISI 316L



soluzioni inossidabili

15



FIG.30

MAT: AISI 316L

CROCE UGUALE O RIDOTTA

Codice	Diametro	€/cad.
PFT030015000	15	SU RICHIESTA
PFT030018000	18	SU RICHIESTA
PFT030022000	22	SU RICHIESTA
PFT030028000	28	SU RICHIESTA
PFT030035000	35	SU RICHIESTA
PFT030042000	42	SU RICHIESTA
PFT030054000	54	SU RICHIESTA
PFT030076000	76,1	SU RICHIESTA
PFT030089000	88,9	SU RICHIESTA
PFT030108000	108	SU RICHIESTA

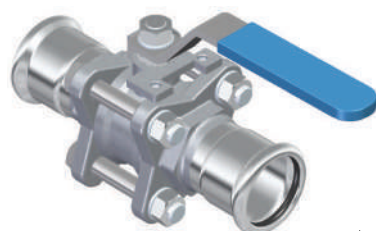
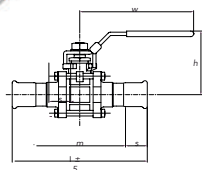


FIG.31

MAT: AISI 316L



VALVOLA A SFERA 3 PEZZI A PINZARE

Codice	Diametro	s	l	w	h	m	€/cad.
PFT031015000	15-DN 15	20	111	110	63	71	153,60
PFT031018000	18-DN 15	20	111	110	63	71	165,14
PFT031022000	22-DN 20	19,5	130	135	68	91	227,54
PFT031028000	28-DN 25	22	141	135	70	97	250,04
PFT031035000	35-DN 32	26	159	160	85	107	372,30
PFT031042000	42-DN 40	30	180	200	90	120	471,33
PFT031054000	54-DN 50	34	203	210	100	135	672,50
PFT031076000	76,1-DN65	54	289	320	145	181	1724,14
PFT031089000	88,9-DN80	58	340	320	155	224	2349,04
PFT031108000	108-DN 100	69	424	320	170	286	3317,00

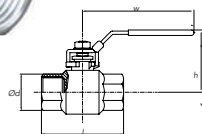
VALVOLA A SFERA FILETTATA FF PASSAGGIO TOTALE

Codice	DN	NPS	d	l	h	w	€/cad.
VALSFCI01304	8	1/4"	9	40	42	75	27,50
VALSFCI01704	10	3/8"	12,5	42,5	42	75	28,00
VALSFCI02104	15	1/2"	15	50	48	85	29,00
VALSFCI02604	20	3/4"	20	56	51	100	39,50
VALSFCI03304	25	1"	25	68	61	105	58,00
VALSFCI04204	32	1"-1/4	32	83	78	120	87,80
VALSFCI04804	40	1"-1/2	38	90	82	120	120,00
VALSFCI06004	50	2"	50	111	95	160	185,00
VALSFCI07604	65	2"-1/2	65	138	115	200	387,00
VALSFCI08804	80	3"	76	156,5	123	200	539,00
VALSFCI11404	100	4"	94	197	157	260	895,00



FIG.32

MAT: AISI 316L



a richiesta disponibile anche MF

CURVA 45° FILETTO MASCHIO

Codice	Diametro	m1	s1	m2	s2	€/cad.
PFT033015102	15-1/2"	34,5	14	40	25	33,80
PFT033018102	18-1/2"	36	16	41,5	26,5	35,14
PFT033018304	18-3/4"	36	16	45,5	28,5	38,59
PFT033022304	22-3/4"	41	20	48,5	31,5	43,94
PFT033028100	28-1"	46	24	56	36	51,89

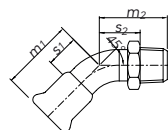


FIG.33

MAT: AISI 316L

CURVA 90° FILETTO FEMMINA

Codice	Diametro	m1	s1	m2	s2	€/cad.
PFT034015308	15-3/8"	48	28	52	39	33,25
PFT034015102	15-1/2"	48	28	52	39	33,25
PFT034018102	18-1/2"	52	32	58	45	38,34
PFT034018304	18-3/4"	52	32	62	47	39,95
PFT034022304	22-3/4"	61	40	67	52	40,71
PFT034028100	28-1"	71,5	49	78	61	52,73
PFT034035114	35-11/4"	86	60	94	75	70,44

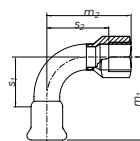


FIG.34

MAT: AISI 316L

CURVA 90° FILETTO FEMMINA GIREVOLE

Codice	Diametro	m1	s1	m2	s2	€/cad.
PFT035015102	15-1/2"	48	28	48	39	33,25
PFT035018102	18-1/2"	52	32	62	53	38,34
PFT035018304	18-3/4"	52	32	60	51	39,95
PFT035022304	22-3/4"	61	40	70	61	40,71
PFT035028100	28-1"	71,5	49	83	73	52,53
PFT035035114	35-11/4"	86	60	101	89	92,94
PFT035042112	42-11/2"	112	82	126,5	115	123,51
PFT035054200	54-2"	105	71,5	119	106,5	154,09

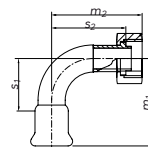


FIG.35

MAT: AISI 316L



soluzioni inossidabili

TEE CON DERIVAZIONE FILETTO MASCHIO

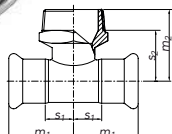


FIG.36

MAT: AISI 316L

Codice	Diametro	m1	s1	m2	s2	€/cad.
PFT036015102	15-1/2"	32	12	36	21	24,43
PFT036015308	15-3/8"	32	12	34,5	21,5	26,95
PFT036018102	18-1/2"	34	14	36,5	21,5	24,76
PFT036018304	18-3/4"	34	14	40,5	23,5	28,78
PFT036022304	22-3/4"	35,5	16	43,5	26,5	32,65
PFT036028100	28-1"	41	19	49,5	29,5	41,26
PFT036035114	35-11/4"	50	24	56,5	34,5	48,26

CURVA 90° FILETTO MASCHIO

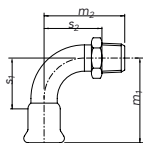


FIG.39

MAT: AISI 316L

Codice	Diametro	m1	s1	m2	s2	€/cad.
PFT039015102	15-1/2"	48	28	53	38	33,80
PFT039015308	15-3/8"	48	28	49	36	33,80
PFT039018102	18-1/2"	52	32	57	42	35,14
PFT039018304	18-3/4"	52	32	61	44	38,59
PFT039022304	22-3/4"	61	40	68	51	43,94
PFT039028100	28-1"	71,5	49	81	61	51,89
PFT039035114	35-11/4"	86	60	96	74	66,08
PFT039042112	42-11/2"	112	82	121	96	102,63
PFT039054200	54-2"	105,2	71,5	112	85	133,90

BOCCHETTONE SEDE PIANA FILETTO MASCHIO

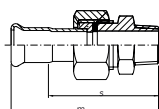


FIG.41

MAT: AISI 316L

Codice	Diametro	m	s	€/cad.
PFT041015102	15-1/2"	72	52	59,75
PFT041015304	15-3/4"	74,5	54,5	63,80
PFT041018102	18-1/2"	74	54	60,20
PFT041018304	18-3/4"	76,5	56,5	64,40
PFT041022100	22-1"	83,5	64	90,33
PFT041022304	22-3/4"	79	58	76,65
PFT041028100	28-1"	90,5	68,5	106,70
PFT041028114	28-11/4"	94	72	122,51
PFT041035114	35-11/4"	104,5	78,5	131,13
PFT041042112	42-11/2"	113	83	208,11
PFT041054200	54-2"	134	100	284,60

BOCCHETTONE SEDE PIANA FILETTO FEMMINA

Codice	Diametro	m	s	€/cad.
PFT042015102	15-1/2"	67	47	58,44
PFT042015304	15-3/4"	69	49	61,00
PFT042018102	18-1/2"	69	47	58,84
PFT042018304	18-3/4"	71	51	64,31
PFT042022100	22-1"	77	57,5	90,38
PFT042022304	22-3/4"	73,5	54	76,65
PFT042028100	28-1"	84,5	62,5	106,80
PFT042028114	28-11/4"	84,5	62,5	115,90
PFT042035114	35-11/4"	96	70	131,31
PFT042042112	42-11/2"	104,5	74,5	208,01
PFT042054200	54-2"	126,5	92,5	284,60

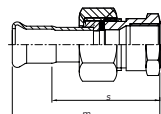


FIG.42

MAT: AISI 316L

MANICOTTO GIREVOLE FILETTO FEMMINA

Codice	Diametro	m	s	€/cad.
PFT045015102	15-1/2"	63,5	34,5	38,25
PFT045015304	15-3/4"	46	19,5	41,99
PFT045018102	18-1/2"	65,5	34,5	40,65
PFT045018304	18-3/4"	48	21,5	42,39
PFT045022304	22-3/4"	65	36,5	51,65
PFT045022100	22-1"	50,5	23,5	67,73
PFT045028100	28-1"	73	39,5	72,48
PFT045028114	28-11/4"	58	27,5	71,96
PFT045035114	35-11/4"	76	38	96,20
PFT045035112	35-11/2"	66,5	32	102,16
PFT045042200	42-2"	75	35,5	130,24
PFT045042112	42-11/2"	82,5	41	198,21
PFT045054200	54-2"	91	47	218,70

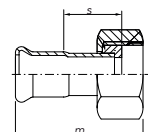


FIG.45

MAT: AISI 316L

BOCCHETTONE 3 PEZZI (SEDE PIANA)

Codice	Diametro	m	s	€/cad.
PFT046015000	15	95	20	86,76
PFT046018000	18	99	20	100,19
PFT046022000	22	104	19,4	112,76
PFT046028000	28	117	22,2	167,24
PFT046035000	35	135,5	26	182,14
PFT046042000	42	152	30	236,49
PFT046054000	54	157	35	368,55

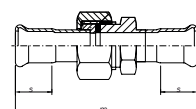


FIG.46

MAT: AISI 316L



soluzioni inossidabili

19

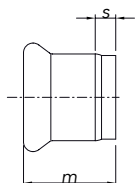


FIG.47

MAT: AISI 316L

MEZZO MANICOTTO

Codice	Diametro	m	s	€/cad.
PFT047015000	15	28	8	5,49
PFT047018000	18	28	8	6,45
PFT047022000	22	27,5	8	7,34
PFT047028000	28	30,5	8	9,16
PFT047035000	35	34	8	12,13
PFT047042000	42	38	8	15,65
PFT047054000	54	42	8	18,83
PFT047076000	76,1	69,5	16	69,06
PFT047089000	88,9	79,5	21,5	76,61
PFT047108000	108	96,5	27,5	93,85

CURVA 30° FF

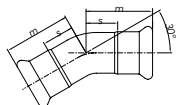


FIG.48

MAT: AISI 316L

Codice	Diametro	m	s	€/cad.
PFT048015000	15	31	11	16,08
PFT048018000	18	32	12	17,58
PFT048022000	22	34,5	15	20,98
PFT048028000	28	40	17,5	26,70
PFT048035000	35	46,5	20,5	40,16
PFT048042000	42	56,5	26,5	61,30
PFT048054000	54	58	24	81,40
PFT048076000	76,1	93,5	40,5	329,13
PFT048089000	88,9	97	39,5	419,84
PFT048108000	108	108	39	551,15

TUBO CURVO 30°

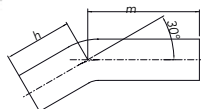


FIG.49

MAT: AISI 316L

Codice	Diametro	m	h	€/cad.
PFT049015000	15	103	53	20,83
PFT049018000	18	100	50	21,38
PFT049022000	22	95	45	22,18
PFT049028000	28	88,5	48,5	23,54
PFT049035000	35	160,5	80,5	48,30
PFT049042000	42	194,5	94,5	60,24
PFT049054000	54	229	129	74,70
PFT049076000	76,1	111,5	111,5	192,70
PFT049089000	88,9	118,5	118,5	233,41
PFT049108000	108	145	145	247,96

CURVA 15° FF

Codice	Diametro	m	s	€/cad.
PFT050015000	15	28,5	9	16,08
PFT050018000	18	28,5	9,5	17,58
PFT050022000	22	30,7	10,5	20,98
PFT050028000	28	34	12	26,70
PFT050035000	35	39	13	40,16
PFT050042000	42	46	16	61,30
PFT050054000	54	53	19	81,40
PFT050076000	76,1	78	24,5	329,13
PFT050089000	88,9	81,5	24	419,84
PFT050108000	108	93,5	24	551,15

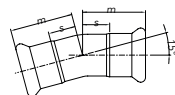


FIG.50

MAT: AISI 316L

CURVA 60° FF

Codice	Diametro	m	s	€/cad.
PFT051015000	15	38	18	21,08
PFT051018000	18	40,5	20,5	22,56
PFT051022000	22	46,5	25,5	25,89
PFT051028000	28	53	31	33,01
PFT051035000	35	63	37	49,60
PFT051042000	42	80	50	75,68
PFT051054000	54	78	44	100,53
PFT051076000	76,1	129	75	318,53
PFT051089000	88,9	132,5	76	406,29
PFT051108000	108	141,5	72,5	533,36

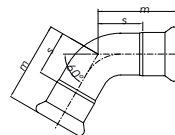


FIG.51

MAT: AISI 316L

MANICOTTO FLANGIATO PN6

Codice	Diametro	D	k	b	d ₂	h	n*	z	€/cad.
PFT052015015	15-DN 15	80	55	12	11	61	4	41	123,91
PFT052018015	18-DN 15	80	55	12	11	46	4	26	129,26
PFT052022020	22-DN 20	90	65	14	11	52,5	4	33	137,98
PFT052028025	28-DN 25	100	75	14	11	52	4	30	162,31
PFT052035032	35-DN 32	120	90	16	14	65	4	39	262,40
PFT052042040	42-DN 40	130	100	16	14	77	4	47	308,75
PFT052054050	54-DN 50	140	110	16	14	68	4	34	320,60
PFT052076065	76,1-DN65	160	130	16	14	114	4	60	453,55
PFT052089080	88,9-DN80	190	150	18	18	128	4	70	562,69
PFT052108100	108-DN 100	210	170	18	18	158	4	89	807,55

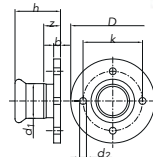


FIG.52

MAT: AISI 316L



soluzioni inossidabili

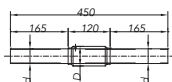
21

PASSAGGIO STAGNO



FIG.53

MAT: AISI 316L



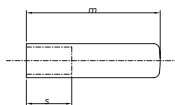
Codice	Diametro	d	D	€/cad.
PFT053015000	15	15	25	143,21
PFT053018000	18	18	30	169,28
PFT053022000	22	22	33	195,31
PFT053028000	28	28	37	240,83
PFT053035000	35	35	43,5	273,45
PFT053042000	42	42	53	313,65
PFT053054000	54	54	69	351,54
PFT053076000	76,1	76,1	88,5	686,86
PFT053089000	88,9	88,9	107	937,49
PFT053108000	108	108	131,5	1188,08

TAPPO



FIG.54

MAT: AISI 316L



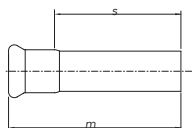
Codice	Diametro	s	m	€/cad.
PFT054015000	15	20	59	14,23
PFT054018000	18	21	63	15,90
PFT054022000	22	21	66	17,66
PFT054028000	28	24	75	20,59
PFT054035000	35	27	83	24,76
PFT054042000	42	32	104	32,16
PFT054054000	54	39	118	38,74
PFT054076000	76,1	55	172	78,88
PFT054089000	88,9	64	192	95,13
PFT054108000	108	78	226	104,15

RACCORDO A SALDARE



FIG.55

MAT: AISI 316L



Codice	Diametro	s	m	€/cad.
PFT055015000	15	110	130	6,68
PFT055018000	18	110	130	7,91
PFT055022000	22	110	129,5	9,44
PFT055028000	28	110	132,5	11,88
PFT055035000	35	110	136	16,08
PFT055042000	42	110	140	20,55
PFT055054000	54	110	144	25,00

TUBO CURVO 60°

Codice	Diametro	m	h	€/cad.
PFT058015000	15	110	60	22,75
PFT058018000	18	108	58	23,30
PFT058022000	22	106	56	24,21
PFT058028000	28	102	62	25,68
PFT058035000	35	177	97	52,69
PFT058042000	42	218	118	65,10
PFT058054000	54	259	159	81,46
PFT058076000	76,1	147	147	188,19
PFT058089000	88,9	154	154	238,25
PFT058108000	108	185	185	250,74

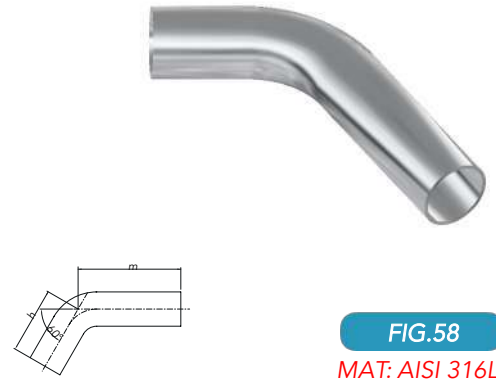


FIG.58
MAT: AISI 316L

TUBO CURVO 15°

Codice	Diametro	m	h	€/cad.
PFT059015000	15	97	47	20,01
PFT059018000	18	96,5	46,5	20,55
PFT059022000	22	90,5	40,5	21,31
PFT059028000	28	83	43	22,60
PFT059035000	35	153	73	46,35
PFT059042000	42	184	84	57,31
PFT059054000	54	216	116	71,71
PFT059076000	76,1	96	96	192,70
PFT059089000	88,9	103	103	233,41
PFT059108000	108	127	127	247,96

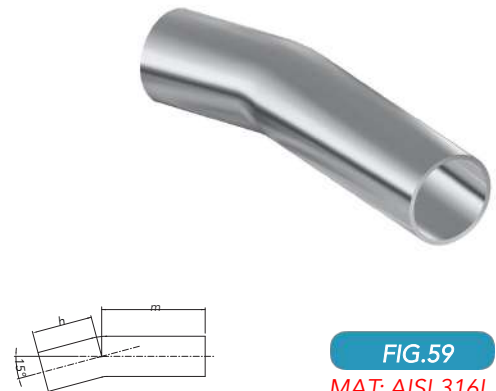


FIG.59
MAT: AISI 316L

RACCORDO PER GIUNTO SCANALATO

Codice	Diametro	D	L	Z	€/cad.
PFT061028337	DN 28 x 33,7	33,7	80	40	28,35
PFT061035424	DN 35 x 42,4	42,4	88,5	40	34,01
PFT061042483	DN 42 x 48,3	48,3	96	40	42,58
PFT061054603	DN 54 x 60,3	60,3	107	40	110,54
PFT061076730	DN 76,1 x 73	73	152	40	149,64
PFT061076487	DN 76,1 x 76,1	76,1	152	40	148,54
PFT061089545	DN 88,9 x 88,9	88,9	166	40	166,05
PFT061108719	DN 108 x 114,3	114,3	188,5	40	218,98

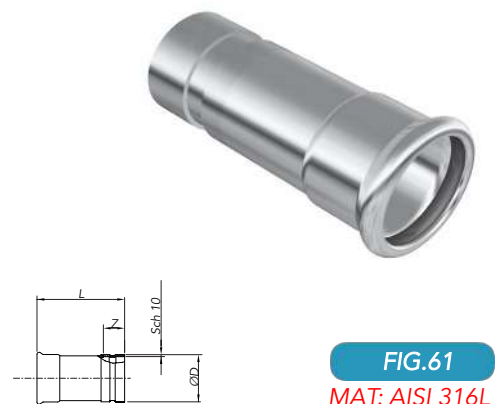


FIG.61
MAT: AISI 316L



soluzioni inossidabili

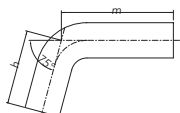
TUBO CURVO 75°

Codice	Diametro	m	h	€/cad.
PFT063015000	15	115	65	24,98
PFT063018000	18	114	64	25,64
PFT063022000	22	112	62	26,61
PFT063028000	28	110	70	28,23
PFT063035000	35	187	107	57,95
PFT063042000	42	233	133	71,65
PFT063054000	54	278	178	89,63
PFT063076000	76,1	168,5	168,5	207,01
PFT063089000	88,9	175,5	175,5	262,10
PFT063108000	108	209,5	209,5	275,80



FIG.63

MAT: AISI 316L



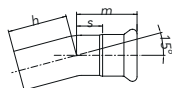
CURVA 15° MF

Codice	Diametro	m	h	s	€/cad.
PFT064015000	15	28	41	8	16,50
PFT064018000	18	28,5	43,5	8,5	18,39
PFT064022000	22	30	44,5	10,5	21,86
PFT064028000	28	34	48	11,5	26,89
PFT064035000	35	39	50	13	40,10
PFT064042000	42	46	56,5	16	60,96
PFT064054000	54	53	65	19,5	80,70
PFT064076000	76,1	78	96	24,5	315,94
PFT064089000	88,9	81,5	103	24	400,16
PFT064108000	108	96	127	27,5	531,05



FIG.64

MAT: AISI 316L



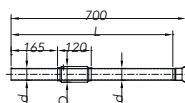
PASSAGGIO STAGNO MF

Codice	Diametro	d	D	L	€/cad.
PFT065015000	15	15	25	672	151,93
PFT065018000	18	18	30	672	178,94
PFT065022000	22	22	33	672	207,44
PFT065028000	28	28	37	670	256,44
PFT065035000	35	35	43,5	666	291,98
PFT065042000	42	42	53	662	337,86
PFT065054000	54	54	69	658	376,78
PFT065076000	76,1	76,1	88,5	630	765,55
PFT065089000	88,9	88,9	107	620	1023,73
PFT065108000	108	108	131,5	603	1291,55



FIG.65

MAT: AISI 316L



CURVA 30° MF

Codice	Diametro	m	h	s	€/cad.
PFT066015000	15	31	44	11	16,50
PFT066018000	18	32	47	12	18,39
PFT066022000	22	34,5	49	15	21,86
PFT066028000	28	40	53,5	17,5	26,89
PFT066035000	35	46,5	57,5	20,5	40,10
PFT066042000	42	56,5	67	26,5	60,96
PFT066054000	54	66,2	78	32,5	80,70
PFT066076000	76,1	93,5	111,5	40	315,94
PFT066089000	88,9	97	118,5	39,5	400,16
PFT066108000	108	114	145	45	531,05

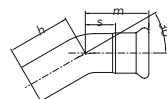


FIG.66

MAT: AISI 316L

COMPENSATORE DI DILATAZIONE

Codice	Diametro	ØD	La	L	€/cad.
PFT071015000	15	26	15	235	381,63
PFT071018000	18	26	15	235	382,99
PFT071022000	22	31	15	241	417,00
PFT071028000	28	40	15	241	565,68
PFT071035000	35	40	15	251	571,00
PFT071042000	42	48	15	261	641,71
PFT071054000	54	71	15	269	776,24
PFT071076000	76,1	88	20	353	1316,00
PFT071089000	88,9	105	25	494	1386,01
PFT071108000	108	128	25	434	1856,21

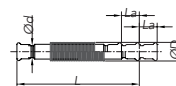


FIG.71

MAT: AISI 316L

TUBO CURVO 45°

Codice	Diametro	m	h	€/cad.
PFT072015000	15	106,5	56,5	22,75
PFT072018000	18	104	54	23,30
PFT072022000	22	100	50	24,21
PFT072028000	28	95	55	25,68
PFT072035000	35	168,5	88,5	52,69
PFT072042000	42	205,5	105,5	65,10
PFT072054000	54	243	143	81,46
PFT072076000	76,1	128	128	202,14
PFT072089000	88,9	135	135	261,43
PFT072108000	108	164	164	278,30

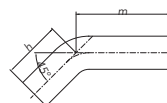


FIG.72

MAT: AISI 316L



soluzioni inossidabili

25

RACCORDO A 3 VIE CON FLANGIA

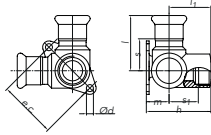


Codice	Diametro	h	m	l	l ₁	∅d	e.c.	s	s ₁	€/cad.
--------	----------	---	---	---	----------------	----	------	---	----------------	--------

PFT076015102	15-1/2"	44	14	50	30	5	39	28	17	59,71
--------------	---------	----	----	----	----	---	----	----	----	-------

FIG.76

MAT: AISI 316L



CURVA 60° MF

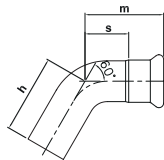


Codice	Diametro	m	h	s	€/cad.
--------	----------	---	---	---	--------

PFT077015000	15	52	61	32	23,88
PFT077018000	18	57	65	37	26,00
PFT077022000	22	65	75	44	31,06
PFT077028000	28	77	84	53	39,61
PFT077035000	35	75	78	48	59,54
PFT077042000	42	87	91	55	90,84
PFT077054000	54	97	102	59	120,63
PFT077076000	76,1	141	148	86	382,23
PFT077089000	88,9	146	154	82	487,53
PFT077108000	108	182	191	104	640,04

FIG.77

MAT: AISI 316L



TUBO INOX AISI 304

Codice	Diametro	Lunghezza 6 mt	€/cad.
PFT7000015T04	15	-	15,19
PFT7000018T04	18	-	17,83
PFT7000022T04	22	-	24,88
PFT7000028T04	28	-	31,54
PFT7000035T04	35	-	48,75
PFT7000042T04	42	-	57,74
PFT7000054T04	54	-	74,48
PFT7000076T04	76,1	-	139,81
PFT7000089T04	88,9	-	163,21
PFT7000108T04	108	-	200,10
PFT7000139T04	139,7x2	-	239,95
PFT7000168T04	168,3x2	-	300,20



FIG.700

TUBO INOX AISI 304 ANTINCENDIO PP ROSSO

Codice	Diametro	Lunghezza 6 mt	€/cad.
PFT6750015T04	15	-	SU RICHIESTA
PFT6750018T04	18	-	SU RICHIESTA
PFT6750022T04	22	-	SU RICHIESTA
PFT6750028T04	28	-	SU RICHIESTA
PFT6750035T04	35	-	SU RICHIESTA
PFT6750042T04	42	-	SU RICHIESTA
PFT6750054T04	54	-	SU RICHIESTA
PFT6750076T04	76,1	-	SU RICHIESTA
PFT6750089T04	88,9	-	SU RICHIESTA
PFT6750108T04	108	-	SU RICHIESTA



FIG.675

TUBO INOX AISI 304 ARIA COMPRESSA PP BLU

Codice	Diametro	Lunghezza 6 mt	€/cad.
PFT6500015T04	15	-	SU RICHIESTA
PFT6500018T04	18	-	SU RICHIESTA
PFT6500022T04	22	-	SU RICHIESTA
PFT6500028T04	28	-	SU RICHIESTA
PFT6500035T04	35	-	SU RICHIESTA
PFT6500042T04	42	-	SU RICHIESTA
PFT6500054T04	54	-	SU RICHIESTA
PFT6500076T04	76,1	-	SU RICHIESTA
PFT6500089T04	88,9	-	SU RICHIESTA
PFT6500108T04	108	-	SU RICHIESTA



FIG.650



soluzioni inossidabili

27



FIG.900



FIG.875



FIG.850



FIG.800

TUBO INOX AISI 316L

Codice	Diametro	Lunghezza 6m	€/m
PFT9000015T16	15	-	19,04
PFT9000018T16	18	-	22,48
PFT9000022T16	22	-	31,68
PFT9000028T16	28	-	40,33
PFT9000035T16	35	-	62,40
PFT9000042T16	42	-	74,16
PFT9000054T16	54	-	95,76
PFT9000076T16	76,1	-	177,03
PFT9000089T16	88,9	-	204,83
PFT9000108T16	108	-	250,83
PFT9000139T16	139,7x2	-	356,26
PFT9000168T16	168,3x2	-	449,81

TUBO INOX AISI 316L ANTINCENDIO PP ROSSO

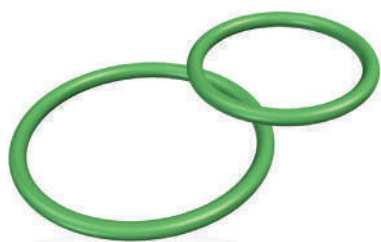
Codice	Diametro	Lunghezza 6m	€/m
PFT8750015T16	15	-	SU RICHIESTA
PFT8750018T16	18	-	SU RICHIESTA
PFT8750022T16	22	-	SU RICHIESTA
PFT8750028T16	28	-	SU RICHIESTA
PFT8750035T16	35	-	SU RICHIESTA
PFT8750042T16	42	-	SU RICHIESTA
PFT8750054T16	54	-	SU RICHIESTA
PFT8750076T16	76,1	-	SU RICHIESTA
PFT8750089T16	88,9	-	SU RICHIESTA
PFT8750108T16	108	-	SU RICHIESTA

TUBO INOX AISI 316L ARIA COMPRESSA PP BLU

Codice	Diametro	Lunghezza 6m	€/m
PFT8500015T16	15	-	SU RICHIESTA
PFT8500018T16	18	-	SU RICHIESTA
PFT8500022T16	22	-	SU RICHIESTA
PFT8500028T16	28	-	SU RICHIESTA
PFT8500035T16	35	-	SU RICHIESTA
PFT8500042T16	42	-	SU RICHIESTA
PFT8500054T16	54	-	SU RICHIESTA
PFT8500076T16	76,1	-	SU RICHIESTA
PFT8500089T16	88,9	-	SU RICHIESTA
PFT8500108T16	108	-	SU RICHIESTA

TUBO INOX AISI 316L RICOTTO

Codice	Diametro	Lunghezza 6m	€/m
PFT8000015TR6	15	-	28,21
PFT8000018TR6	18	-	30,30
PFT8000022TR6	22	-	40,76
PFT8000028TR6	28	-	49,91
PFT8000035TR6	35	-	74,25
PFT8000042TR6	42	-	88,59
PFT8000054TR6	54	-	111,75
PFT8000076TR6	76,1	-	207,08
PFT8000089TR6	88,9	-	243,66
PFT8000108TR6	108	-	294,11



O-RING EPDM

Codice	Diametro	m	s	€/cad.
PFT00N015		15		0,36
PFT00N018		18		0,43
PFT00N022		22		0,83
PFT00N028		28		1,13
PFT00N035		35		1,19
PFT00N042		42		1,25
PFT00N054		54		1,34
PFT00N076		76,1		8,61
PFT00N089		88,9		10,50
PFT00N108		108		12,24
PFT00N139		139,7		SU RICHIESTA
PFT00N168		168,3		SU RICHIESTA

O-RING FKM

Codice	Diametro	m	s	€/cad.
PFT00V018		18		1,00
PFT00V022		22		1,34
PFT00V028		28		2,19
PFT00V035		35		2,44
PFT00V042		42		3,38
PFT00V054		54		4,48
PFT00V076		76,1		16,35
PFT00V089		88,9		26,61
PFT00V108		108		48,75
PFT00V139		139,7		SU RICHIESTA
PFT00V168		168,3		SU RICHIESTA

GUARNIZIONE PIANA (PER FIG.11)

Codice	Diametro	€/cad.
PFTG11102	1/2"	1,28
PFTG11304	3/4"	1,70
PFTG11100	1"	2,03
PFTG11114	1 1/4"	2,66
PFTG11112	1 1/2"	3,16
PFTG11200	2"	3,85
PFTG11212	2 1/2"	5,79
PFTG11300	3"	7,10



GUARNIZIONE PIANA (PER FIG.41, FIG.42, FIG.45, FIG.46)

Codice	Diametro	€/cad.
PFTG40102	1/2"	1,34
PFTG40304	3/4"	1,80
PFTG40100	1"	1,86
PFTG40114	1 1/4"	1,86
PFTG40112	1 1/2"	2,10
PFTG40200	2"	3,01
PFTG40212	2 1/2"	3,59
PFTG40300	3"	4,39



soluzioni inossidabili

D2ZERO



SOLUZIONI INOSSIDABILI



D2zerø
soluzioni inossidabili

D2ZERO SRLS

VIA CIRCONVALLAZIONE 188, 10026 SANTENA (TO)



011.9454409



info@d2zero.com



www.d2zero.com